

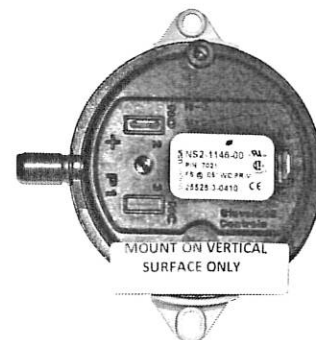
ENGLISH INSTALLATION INSTRUCTIONS



MODEL 12500

AIR PRESSURE SWITCH

**FOR INSTALLATION ON ANY FORCED
AIR HEATING AND COOLING SYSTEM**



This Air Pressure Switch is designed to control Humidifier operation: by sensing changes in air pressure within the furnace plenums when the furnace is in operation. The Air Pressure Switch can be actuated by a positive pressure, negative pressure or a differential pressure of .05" W.C. or more. The Air Pressure Switch contains normally open, single throw contacts to complete the humidifier control circuit or supply 24V A.C. to the humidifier when the furnace blower runs.

IMPORTANT: SINGLE POLE, SINGLE THROW ON/OFF SWITCH MUST BE INSTALLED IN THE POWER SUPPLY TO TURN HUMIDIFIER OFF DURING COOLING SEASON. FIELD SUPPLIED.

1. Mount Air Flow Switch on a vertical surface. Switch must be oriented vertically. Do not mount switch on or in warm air plenum. Use care when drilling holes so as not to damage furnace electronics, fuel lines, combustion chamber, etc.
2. Mount plenum probes. Select locations on supply and return plenums so length of 8-foot supplied hose will be sufficient. Drill 1/4" hole and insert long end of probe into duct. Use two sheet metal screws to secure probe.
3. Trim hoses to length. Connect supply plenum probe to high pressure port (front-black "+P1"). Connect return plenum to low pressure port (rear-grey "-P2").
4. The Air Pressure Switch is to be wired into a humidifier's control circuit or to a 24 volt power source. Wire humidifier, air flow switch and toggle switch per local codes using appropriate wiring diagram below.

FIG. 5A For 24v. Bypass Humidifiers. Wire the Air Pressure Switch in series with the humidistat (optional) and transformer low voltage terminals.

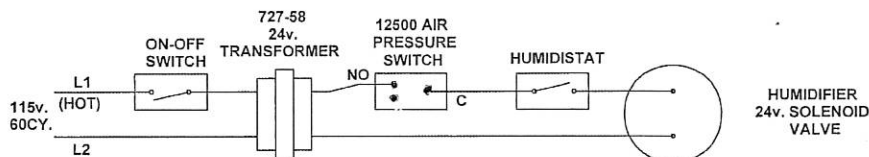


FIG. 5B For 120v. Fan Powered Humidifiers. Install the on/off switch and Air Pressure Switch in series with the humidistat (optional) and the low voltage control leads.

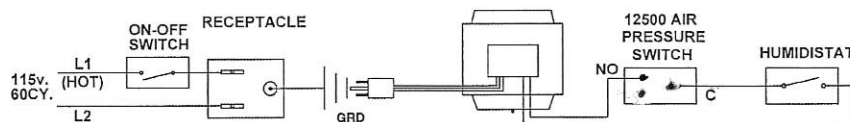
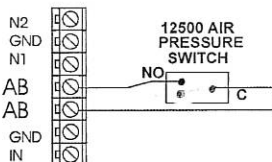


FIG. 5C For Elite Steam Humidifiers. Wire the Air Pressure Switch in series with the two "AB" terminals. The jumper installed between the two screws must be removed and may be discarded.



PARTS LIST FOR PRESSURE SWITCH

12502	Pressure Differential Switch
12506	Hose
P224	Mounting Screw

GENERAL FILTERS, INC.
43800 GRAND RIVER AVE.
NOVI, MI 48375-1115
WWW.GENERALAIR.COM

Form No. 12507 Rev. E.

CANADIAN GENERAL FILTERS, LTD.
400 MIDWEST ROAD
TORONTO, ONTARIO, CANADA M1P3A9
WWW.CGFFPRODUCTS.COM
Litho in U.S.A. Lithographie aux É.-U.